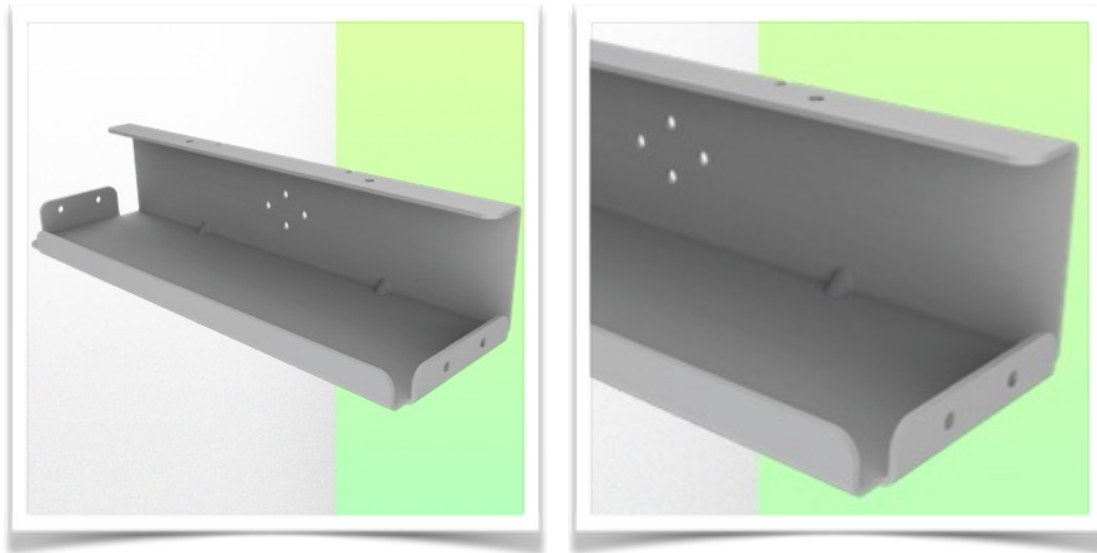




Support pour bloc d'alimentation électrique 400 x129 x 129 mm



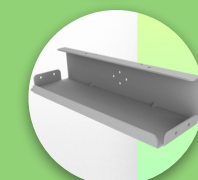
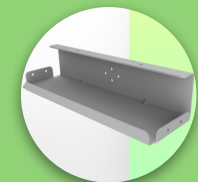
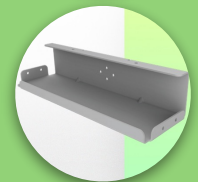
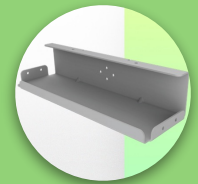
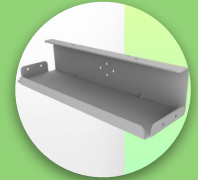
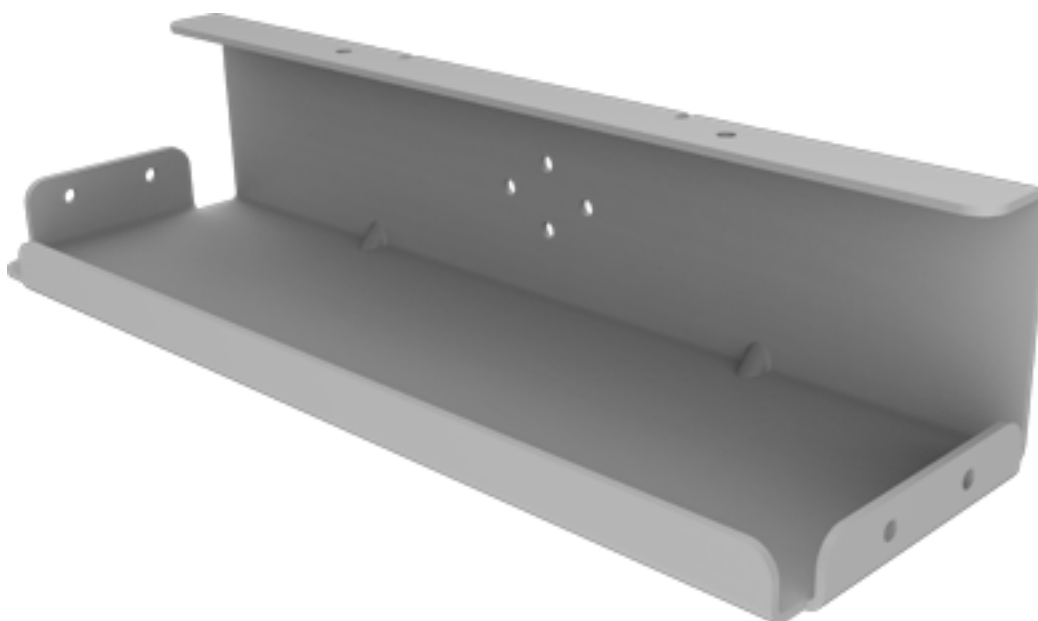
Espace pour le stockage des câbles



Facile à nettoyer

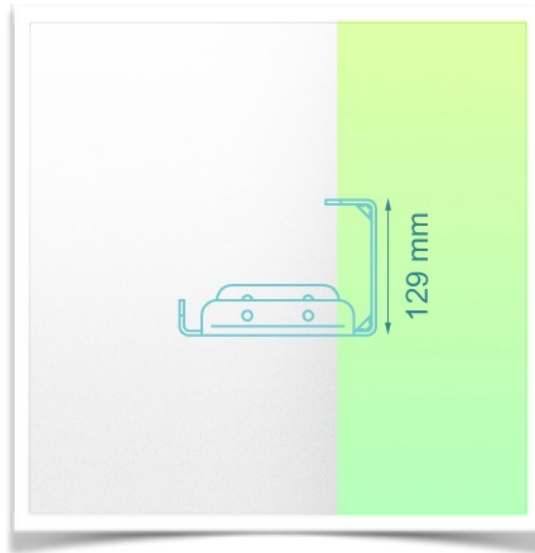
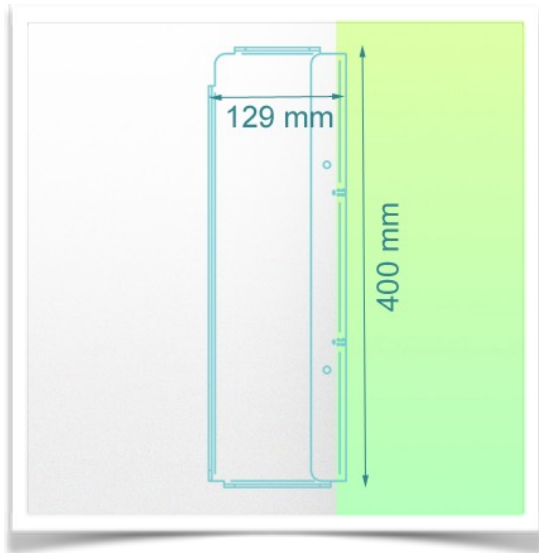


Installation sur toute la gamme de chariots médicaux WorkiMed





Support pour bloc d'alimentation électrique 400 x129 x 129 mm



**Données mécaniques**

Dimension interne 400 x129 x 129 mm

**Construction**

Matériau : Acier doux

**Couleur**

RAL 9016 Blanc / Aluminium

